



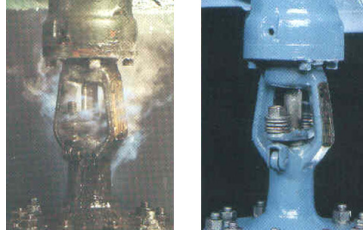
Kan-Seal - Valve Repacking Services

PO Box 453, Burlington, KS 66839 | (620) 364-3600 | customer.service@kanseal.com | www.kanseal.com

Kan-Seal is Solving Problems where Others have Failed

Complete Valve Packing Programs customized to your company's needs.

- Valve repacking services
- Combination graphite packing sets
- **SmartSeal™** Packing Software
- Dedicated technical support personnel
- Training – valve packing & gasket applications
- Job completion closeout report with valve data sheets for every valve showing as-built packing configurations



How Kan-Seal Does It

Kan-Seal's qualified personnel can perform a leak survey and walk down of all the valves in your plant or have a targeted group of valves you want repacked.



When it is determined what valves to repack, we will walk down all the valves and record all the valve & dimensional data. We then enter this information into our **SmartSeal™** program and create a valve data sheet for each valve to be repacked.

A high-pressure mini water jet packing extractor is used for packing removal. By this method of extraction, speed and efficiency are obtained, saving hours of labor.

We utilize die-formed graphite packing sets customized for each valve and split carbon bushings in valves with deep stuffing boxes to ensure maximum packing consolidation with five ring sets. Customer satisfaction is guaranteed!



Mobile Valve Packing Services Come to Your Site



Kan-Seal Valve Repacking Clients

Kan-Seal is a trusted leader in providing sealing solutions for hard to seal valves. Our service and dedication is second to none.

Wolf Creek Nuclear Operating Corporation
Brent Dale
620-364-8831

Jeffrey Energy Center
Steve Addington
785-256-5222

Flint Creek Generating Station
David Goodman
479-736-4800

Tecumseh Energy Center
David Satterwhite
785-379-4311

Lawrence Energy Center
Randy Stokes
785-331-4746

Hutchinson Energy Center
Galen Lynch
620-728-5207

Gordon Evans Energy Center
Kerry Mauldin
316-291-8611

Fort Calhoun Nuclear Station
Chuck Linden
402-533-6930

Nebraska City Generating Station
Ryan Gerdts
402-514-8122

Conoco Phillips – Ponca City
Tim Cink
580-767-3096

North Omaha Generating Station
Phil Baker
402-636-2604

Contact a Representative Today



Kan-Seal
Chris Menard, President
PO Box 453, Burlington, KS 66839
(620) 364-3600
customer.service@kanseal.com
www.kanseal.com