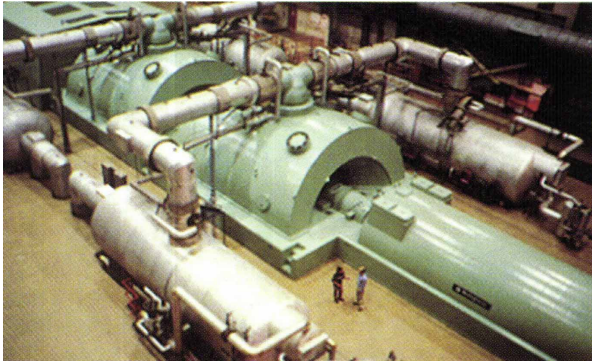




Kan-Seal - Turbine & Generator Gaskets

PO Box 453, Burlington, KS 66839 | (620) 364-3600 | customer.service@kanseal.com | www.kanseal.com

GE, Westinghouse, ABB, and Parsons Turbine & Generator Gaskets



Are you paying high OEM prices with long lead times? Kan-Seal can cross-reference most OEM part numbers for top quality waterjet cut gaskets produced to your needs.

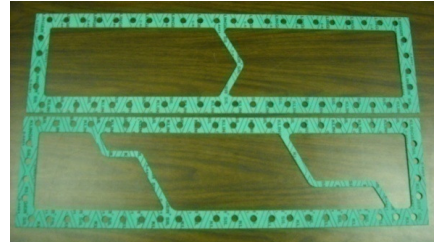
Kan-Seal's short lead times, and central location, help keep you on schedule and on budget.

- Cut Insulated Gaskets For Generators
- Hydrogen Cooler Gaskets & Kits
- Crossover Line Gaskets
- Manway Gaskets
- Reheat & Main Steam Flange Gaskets

High Quality Materials for a Variety of Industrial Applications

- Precision waterjet cut gaskets
- Feedwater heater and cooler gaskets
- Valve bonnet and pump casing gaskets
- Flexitallic spiral wound gaskets
- Full-face and ring flange gaskets
- Non-asbestos sheet materials
- Manway gaskets
- Soft iron, double-jacketed, corrugated and copper gaskets
- Textile products
- Rubber sheet materials
- Teflon and Expanded PTFE products
- Bulk packing and die formed packing sets for valves and pumps
- Mechanical seals - split seals, single and double cartridge
- O-rings and oil seals

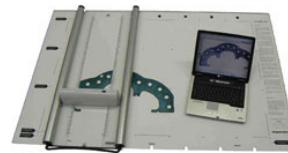
Reverse Engineer OEM Gaskets



Kan-Seal can reverse engineer your OEM gaskets from dimensions, samples, templates, drawings, or import your CAD drawings. Our digital scanner can instantly scan an OEM gasket

into a CAD file ready for cutting in our premiere waterjet cutting facility.

Kan-Seal offers **precision waterjet cut gaskets** accurate to 0.005" with repeatability of 0.002". Acclaimed for its speed, accuracy and cost effectiveness, waterjet cutting is the premier method for rubber fabrication and gasket production today.



Quick Scan to CAD Capability

Kan-Seal's scanner eliminates the need for hand measuring and redrawing. It allows us to automatically scan and convert old drawings, gaskets and seals, etc., into CAD-editable, ready to cut DXF files.

Premiere Gasket Manufacturer & Distributor

- Quality products & service
- Short lead times
- Product training
- Competitive pricing & solutions
- 24/7 customer support availability

Visit www.kanseal.com for more information.

We are happy to provide reference and contact information. Please ask.

Contact a Representative Today



Kan-Seal
Chris Menard, President
Erin Menard, Inside Sales
Ryan Menard, Waterjet Programmer
PO Box 453, Burlington, KS 66839
(620) 364-3600
customer.service@kanseal.com
www.kanseal.com